

Evolution of Military Social Work

Dr. Nathan Keller PhD, LCSW

The Next 3 Days

2023 
MILITARY SOCIAL WORK
& BEHAVIORAL HEALTH
CONFERENCE

 [Conference Home](#) [Program Schedule](#)

Family & Caregiver Support

Trauma, Domestic Violence, and IPV

Suicide Prevention & Trauma Treatment and Supports

Innovative Therapy & Peer Support

Social & Peer Support

Health Equity and Special Supports

Health Equity & Innovative Care

Navigating Basic Needs & Co-Occurring Illnesses

Systems of Change & International Considerations

Civil War



World War I



<https://www.military-history.org/feature/shell-shock-cover-up-at-passchendaele.htm>



<https://alaska.salvationarmy.org/alaska/news/donut-day-facts/>

World War II



<https://online.simmons.edu/blog/evolution-social-work-historical-milestones/>



<https://online.simmons.edu/blog/evolution-social-work-historical-milestones/>

1943 Active Duty Social Workers



FIGURE 46.—A psychiatric social work officer giving an orientation lecture on the functions of the neuropsychiatric service to new prisoners, U.S. Disciplinary Barracks.



FIGURE 52.—T3g. Ellen Sellers, WAC psychiatric social worker, interviewing a neuro-psychiatric patient at Brooke General Hospital, Fort Sam Houston, Tex.

1950 Medical Social Work Discharge Planning



<https://www.statnews.com/2016/10/21/cigarettes-hospital-medicine/>



https://www.army.mil/article/20337/walter_reed_marks_100_years_of_warrior_care

1960-1970 Race Relations and Addictions



<https://www.nebraskapress.unl.edu/nebraska/9781496215192/>



<https://www.thetimes.co.uk/article/shooting-up-a-history-of-drugs-and-war-by-lukasz-kamienski-rt396cj6t>

1980s-1990s Domestic Violence Child Welfare



1993



Military Social Work Reality



NASW Military Social Work Reality

NASW CONFERENCE

MILITARY SOCIAL WORK CONFERENCE



Stigma

MILITARY BEHAVIORAL HEALTH STIGMA



NASW MILITARY STIGMA



https://commons.wikimedia.org/wiki/File:AntiVietnam_War_demonstration_at_Phillip_Street_Court,_Sydney,_NSW_12.jpg

1995 Combat Stress (CSC)



September 11, 2001



<https://www.latimes.com/travel/la-xpm-2001-sep-12-na-sept-11-attack-201105-01-story.html>

Battlemind/Resiliency

BATTLEMIND
ARMOR FOR YOUR MIND



Battlemind:

An Overview



2007 Embedded Behavioral Health



Education and Training



Future Military Social Work Initiatives



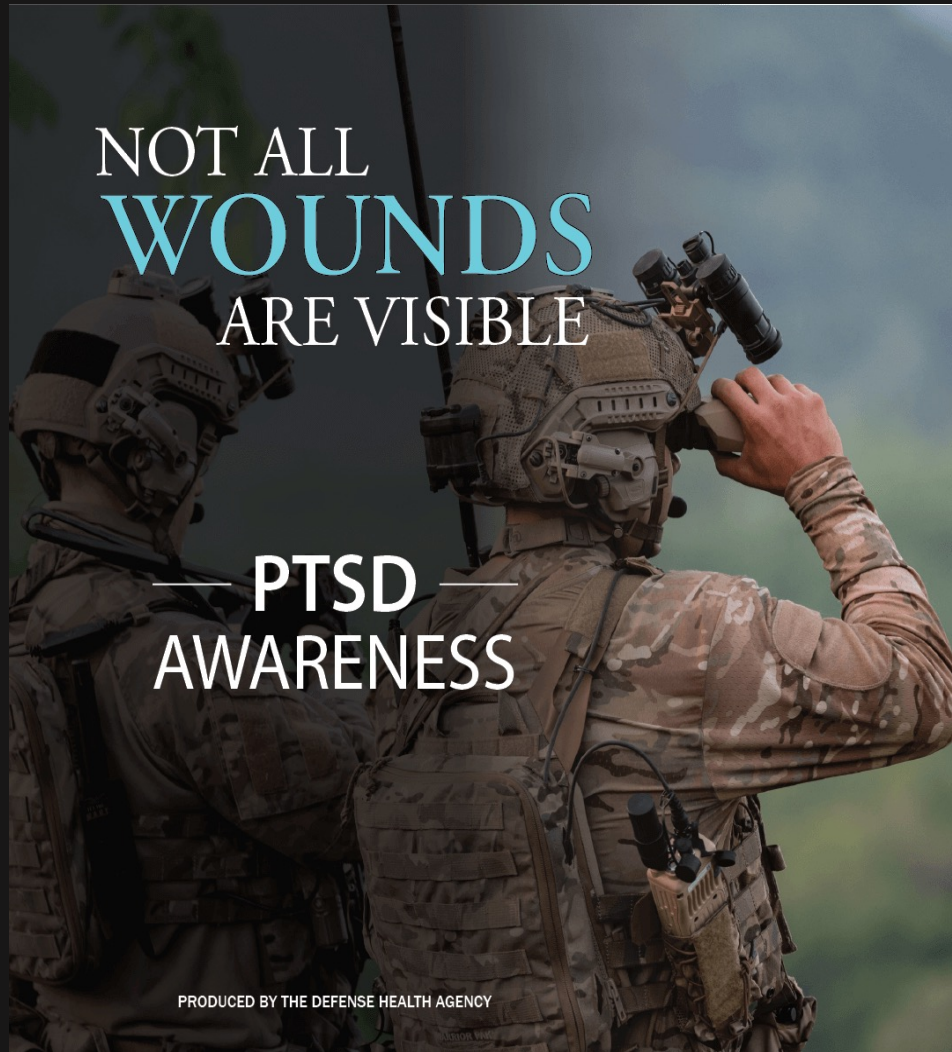
Military Families



**SUPPORT
MILITARY
FAMILIES**

The logo features a heart shape formed by a red, white, and blue striped ribbon on the left side, transitioning into a blue ribbon with white stars on the right side. To the right of the heart, the words "SUPPORT MILITARY FAMILIES" are written in a bold, black, sans-serif font, stacked vertically.

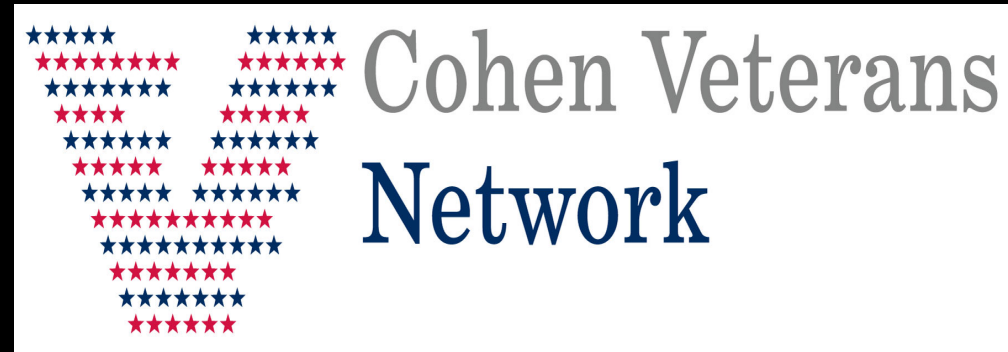
Trauma and High Risk Behavior



Balance Operational and Clinical SW

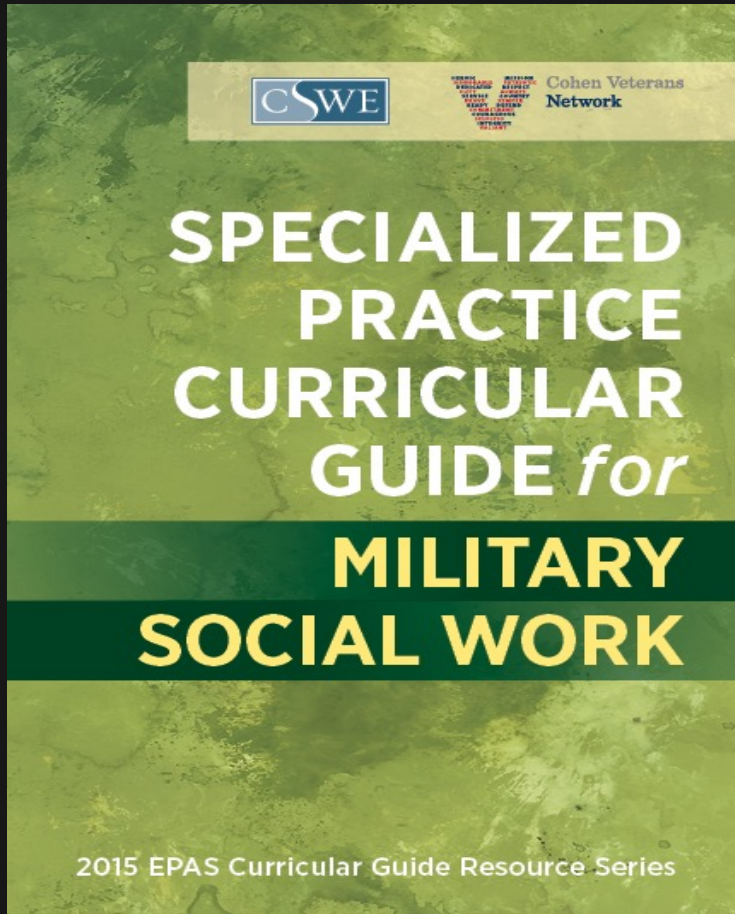


Joint Operations and Civilian Partners

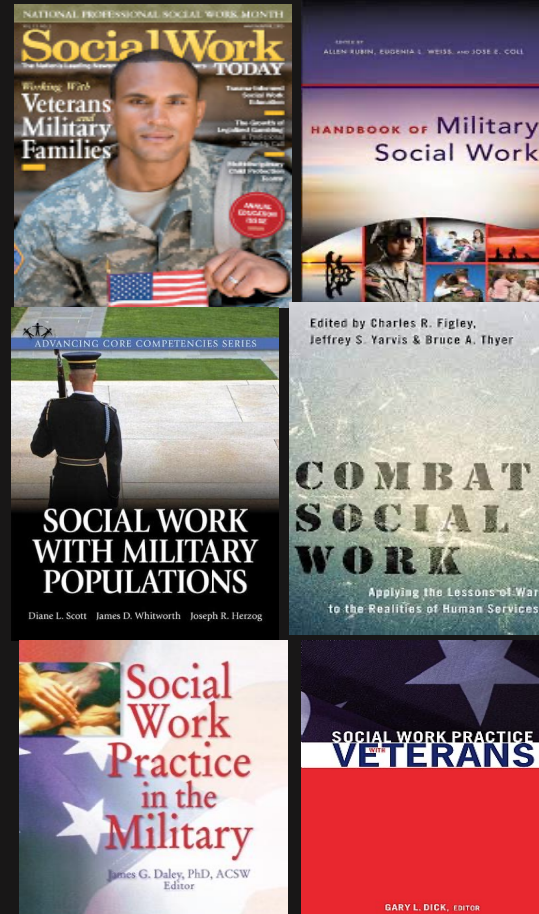


Education and Training

CSWE



RESEARCH



CONFERENCES



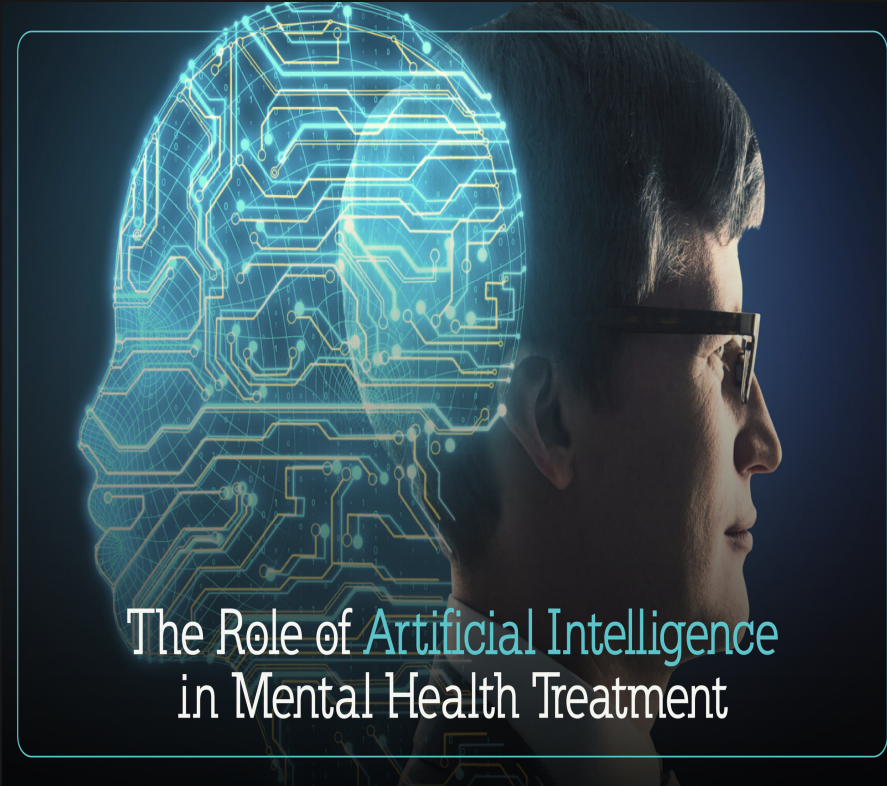
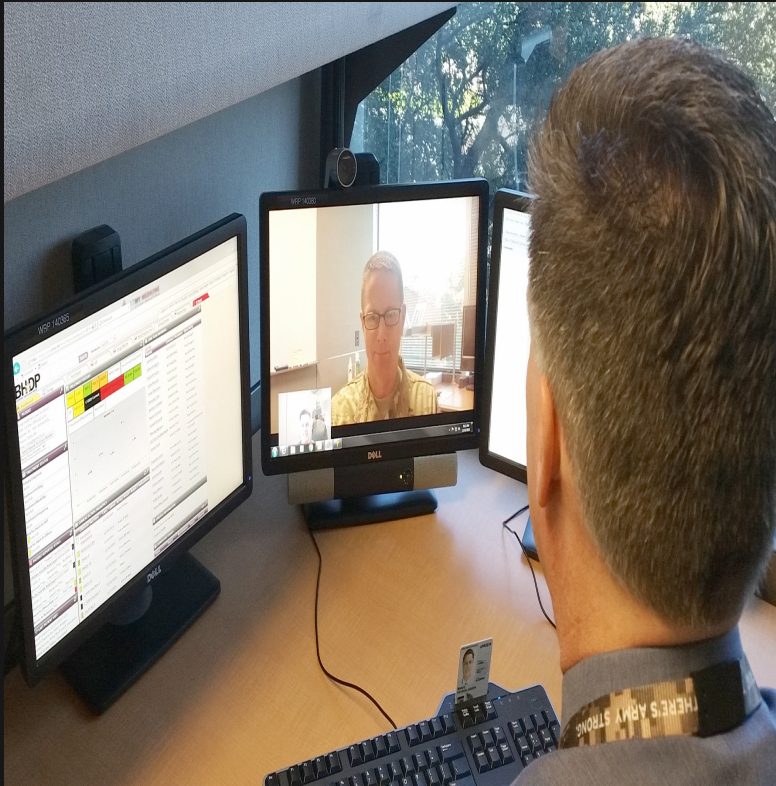
Diversity Equity and Inclusion



Wellness



Technology



The Role of Artificial Intelligence
in Mental Health Treatment



<https://www.akuamindbody.com/the-role-of-artificial-intelligence-in-mental-health-treatment/>

SW BBQ TODAY

