

# The Intersection of Public Health and Social Work For Preventing Suicide: Leadership Examples

KEITA FRANKLIN, LCSW, PHD

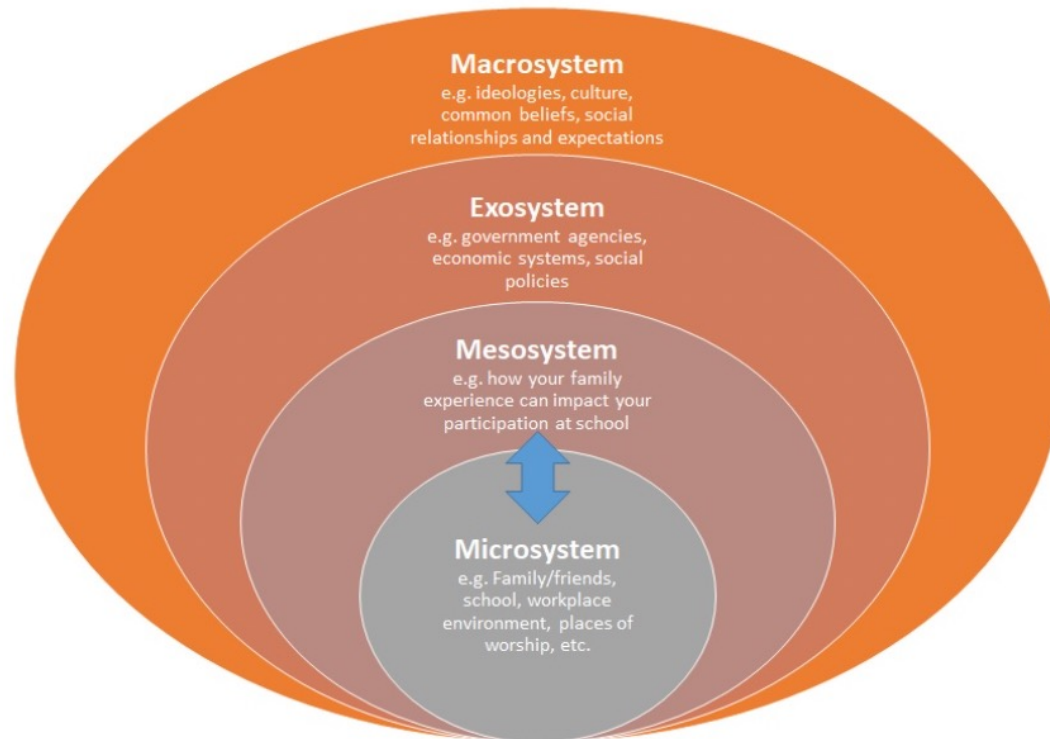
TINA ATHERALL, LMSW, DSW

2023 MILITARY SOCIAL WORK AND BEHAVIORAL HEALTH CONFERENCE

# Moving From Medical Models to Public Health Approaches



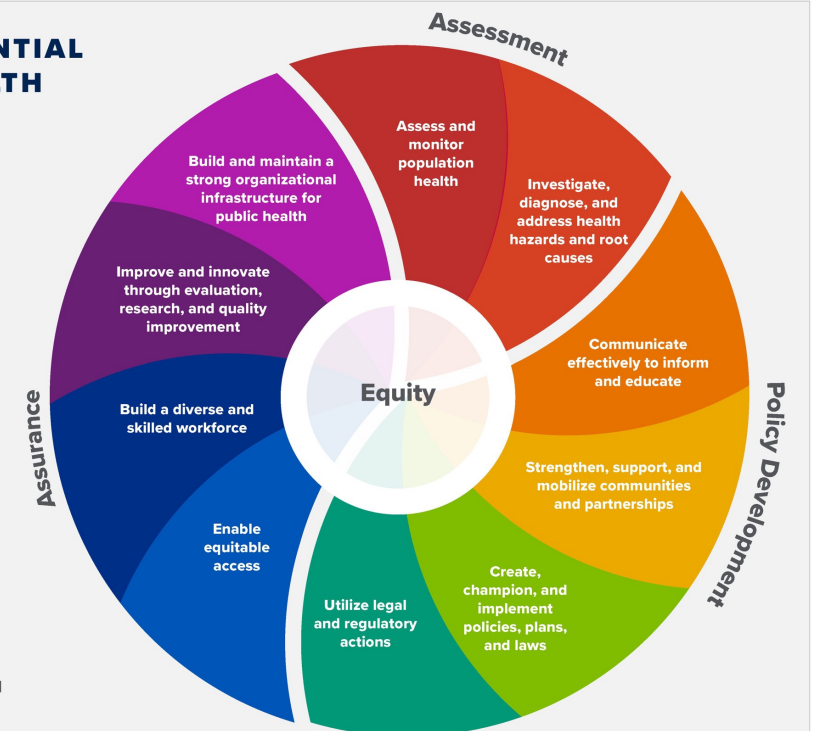
## System Theory



## THE 10 ESSENTIAL PUBLIC HEALTH SERVICES

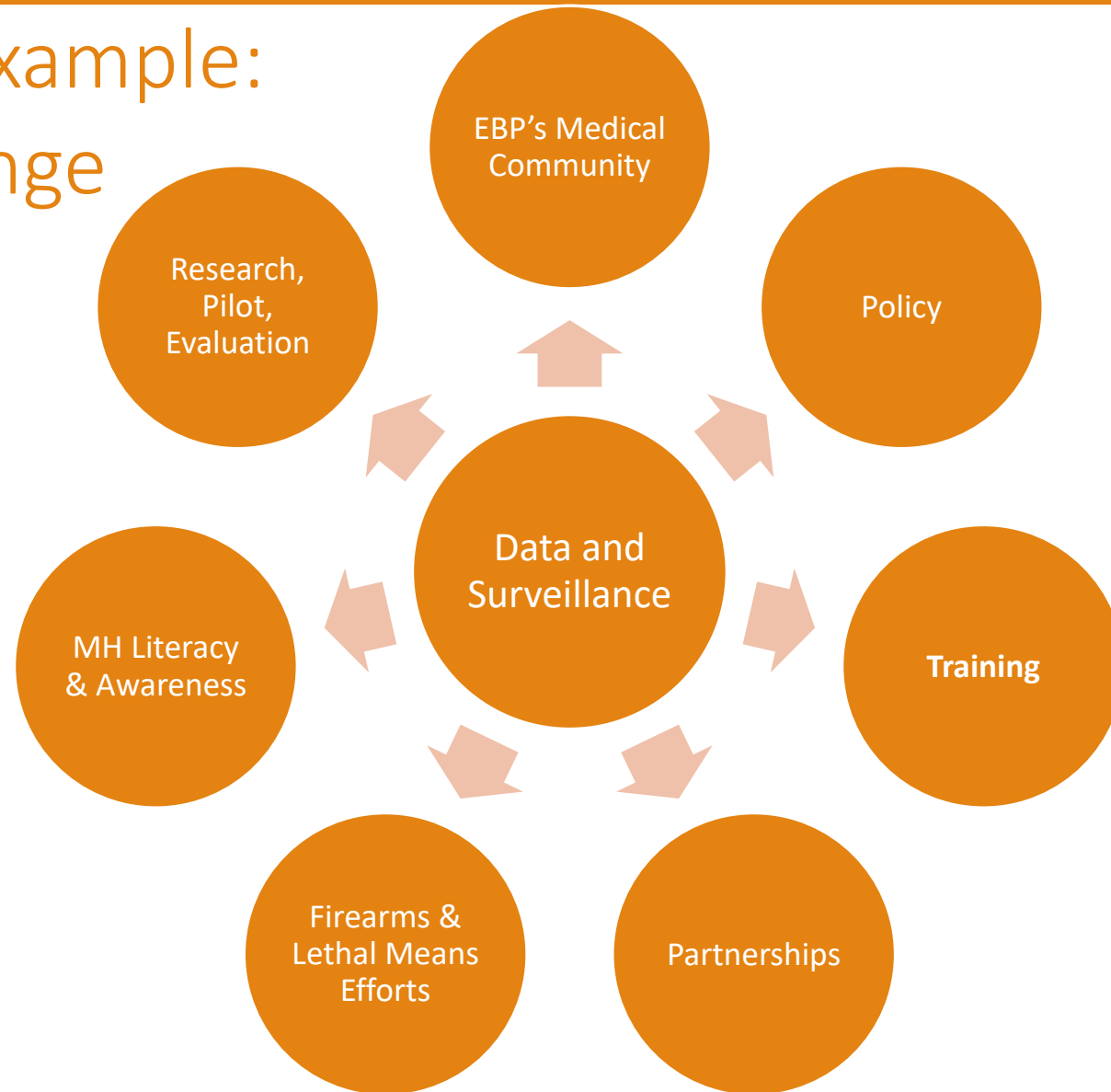
*To protect and promote the health of all people in all communities*

The 10 Essential Public Health Services provide a framework for public health to protect and promote the health of all people in all communities. To achieve optimal health for all, the Essential Public Health Services actively promote policies, systems, and services that enable good health and seek to remove obstacles and systemic and structural barriers, such as poverty, racism, gender discrimination, and other forms of oppression, that have resulted in health inequities. Everyone should have a fair and just opportunity to achieve good health and well-being.



Created 2020

# Leadership Example: Systems Change



# A Comprehensive Program

<b>Development, Dissemination, Training and Evaluation of Evidence-Based Practice</b>	<b>Screening Protocols for all environments</b>	<b>Coalition Development Technical Assistance on Local Work Plans</b>	<b>PostVention Programming</b>
<b>Public, Private, Non- Profit Partnerships</b>	<b>Media Outreach and Engagement</b>	<b>Best Practices – Medical Community</b>	<b>Data and Surveillance</b>
<b>Mental Health Literacy &amp; Stigma Reduction</b>	<b>Gate-Keeper Training &amp; Engagement</b>	<b>Lethal Means – In and Out of Medical Settings</b>	<b>Peer Support Standards Protocols</b>
<b>Call Center Efforts Crisis, Peer Support Resource, Referral</b>	<b>Testing &amp; Implementation of Interventions Across Sectors</b>	<b>Developing Communities of Practice for sharing best practices</b>	<b>Policies &amp; Oversight</b>

Health Equity as a Foundational Element to ALL Practices

Leadership  
Example:  
Psycharmor  
Strategic Alignment  
& Change

---

1. Informed by VA's National Strategy for Preventing Veteran Suicide 2018-2028

---

2. Organizational restructure to a Public Health Education Framework

---

3. Suicide Prevention, Intervention, Postvention Education

---

4. Strategic alignment with comprehensive program models

---

5. Military Culture & Advancing Health Equity

---

6. Internal systems process: Communication strategies before training

---

7. Systems approach to audience



Social Work &  
Public Health  
Powerful Partners



Bundled Set of Practice Models



Interdisciplinary Teams  
The Core of the Professions



Evaluate Continuously

# Considerations for the field of Social Work

# References:

---

- Centers for Disease Control and Prevention. (n.d.). Essential Public Health Services. Retrieved from <https://www.cdc.gov/publichealthgateway/publichealthservices>
- Golden, T. L., & Wendel, M. L. (2021). Social work competency: A competency-based approach 1: Theories, paradigms, and professional competencies in social work practice. *Journal of Social Work Education, 57*(3), 556-571.
- Golden, T. L., & Wendel, M. L. (2023). Public health's next step in advancing equity: Re-evaluating epistemological assumptions to move social determinants from theory to practice. *American Journal of Public Health, 113*(6), 891-897.
- Macassa, G. (2022). Can the interconnection between public health and social work help address current and future population health challenges? A public health viewpoint. *Journal of Public Health, 114*(2), 227-241. <https://doi.org/10.1177/22799036221102>



Thank you

Keita Franklin, LCSW, PhD  
[KeFranklin@deloitte.com](mailto:KeFranklin@deloitte.com)

Tina Atherall, LMSW, DSW  
[tatherall@psycharmor.org](mailto:tatherall@psycharmor.org)

Back up slides

## **Social Work**

Science Based  
Assessment  
Systems Theory  
Strengths Based Perspectives  
Community Based  
Social Determinants  
Clients Needs/Dignity  
Policy  
Human relationships  
Culturally Relevant  
Universal Efforts  
Communication Campaigns  
Partnerships Matter  
Person in Environment

## **Public Health**

Science Based  
Assessment  
Coalition Building  
Community Based  
Social Determinants  
Whole Health  
Social Problems  
Policy  
Culturally Relevant  
Focused on a population  
Communication – Awareness  
Evaluation  
Research  
Pilot Testing

<https://journals.sagepub.com/doi/full/10.1177/22799036221102653>